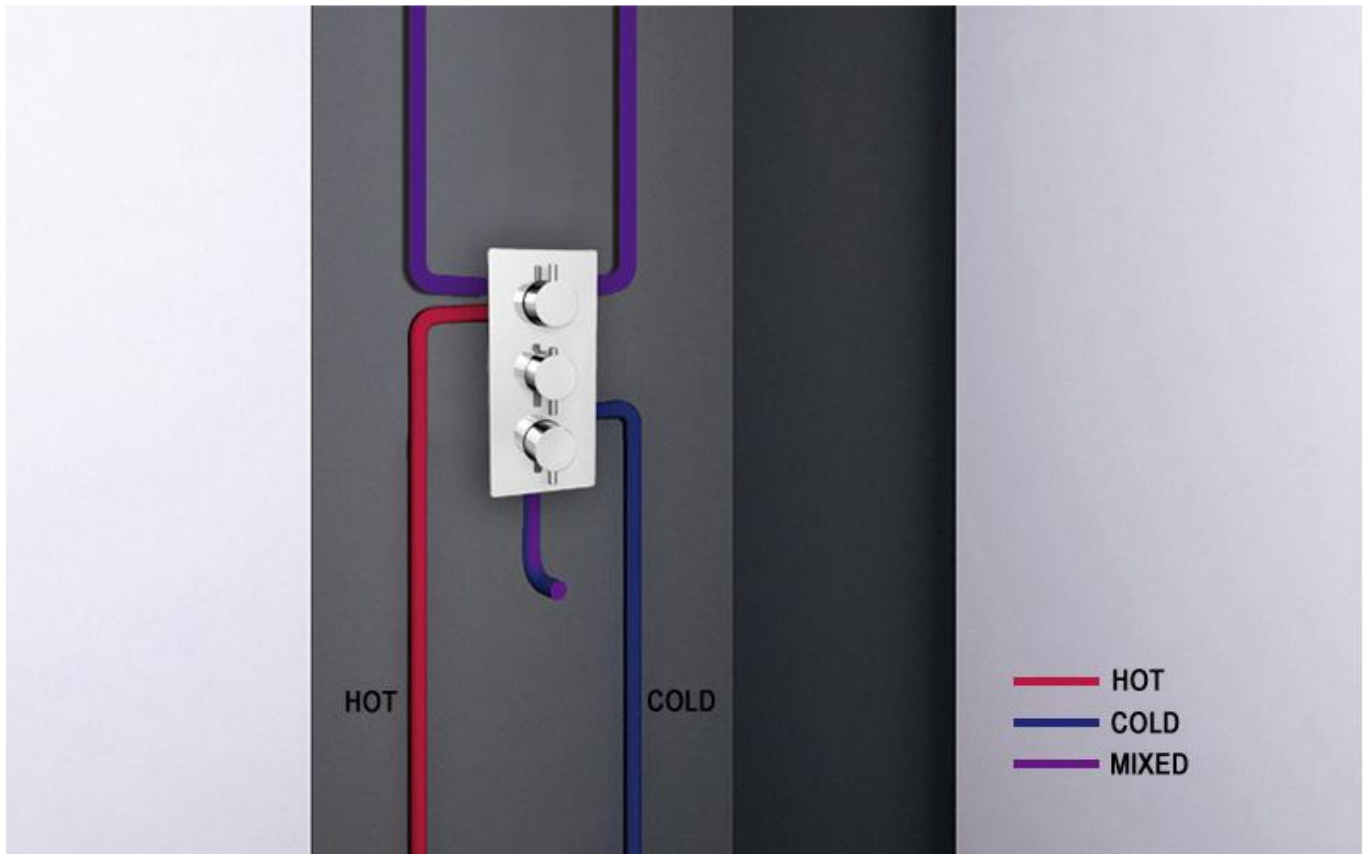
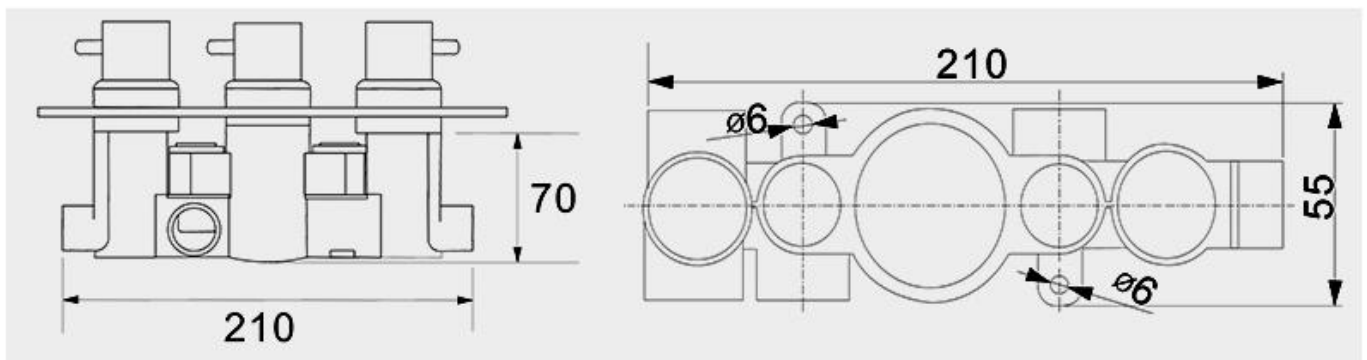


CONCEALED THERMOSTATIC VALVE

Part I: Plumbing Connection Structure



Part II: Rough in Wall Dimensions (in Millimeter)



Part III: Important Information

This guide provides instructions for the installation of Triple Control Thermostatic Shower Valve. It is beyond the scope of this guide to provide detailed instructions for the installation of auxiliary products which may be attached to this valve. Please consult your installer and any guides which are provided with the other products.

Most problems associated with the operation of thermostatic shower valves are caused by debris in the new pipe work getting into the thermostat. These problems are easily avoided by thoroughly flushing the pipe work BEFORE the shower valve is fitted.

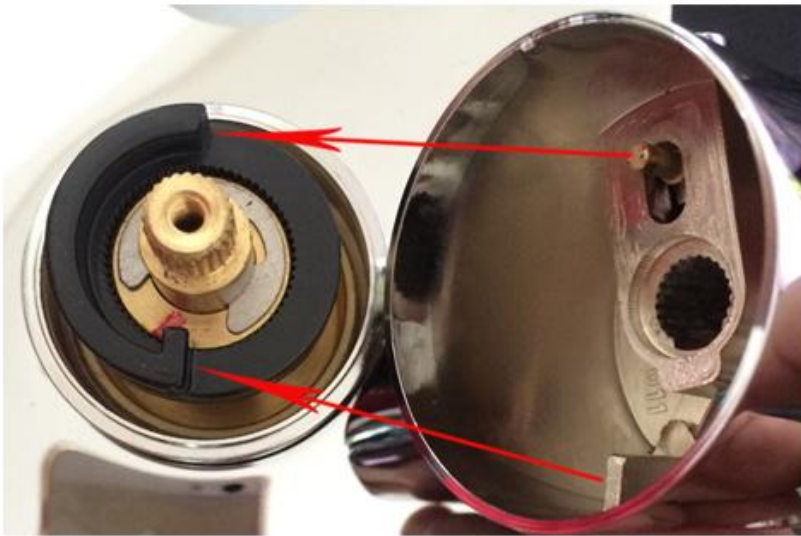
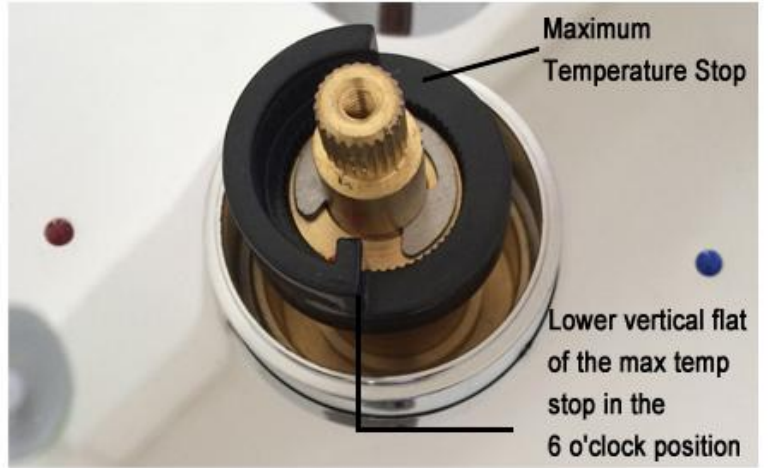
Part IV: Installation Steps



1. Undo the 3 rods and the inner screws to take off the knobs, cover plate and other trims. **DO NOT** try to undo the override button from the knob.
2. Determine the mounting position for the shower valve.
3. Mount the shower valve into the prepared recess in the wall using the mounting lugs cast onto the back of the body.
4. Ensure the valve is mounted to the correct depth from the finished wall surface. Make sure there is adequate clearance from the front to access all components and that the cover plate will cover the finished recess.
5. When the valve is securely mounted into the wall, make the plumbing connections using a proprietary thread sealant.
6. Turn on the water supply and test all pipe work.
7. Re-fit the trims after the wall surface finished.

Part V: Set the High Temperature Limit Stop

1. Remove the maximum temperature stop from the cartridge stem.
2. Turn the water on to one of the functions.
3. Use the knob to turn the cartridge stem until the output water is the desired high temperature.
4. Fit the maximum temperature stop. The orientation is shown in the picture.
5. Fit the knob with the override button in the 12 o'clock position. Once in place, tighten the screw to fix the knob.



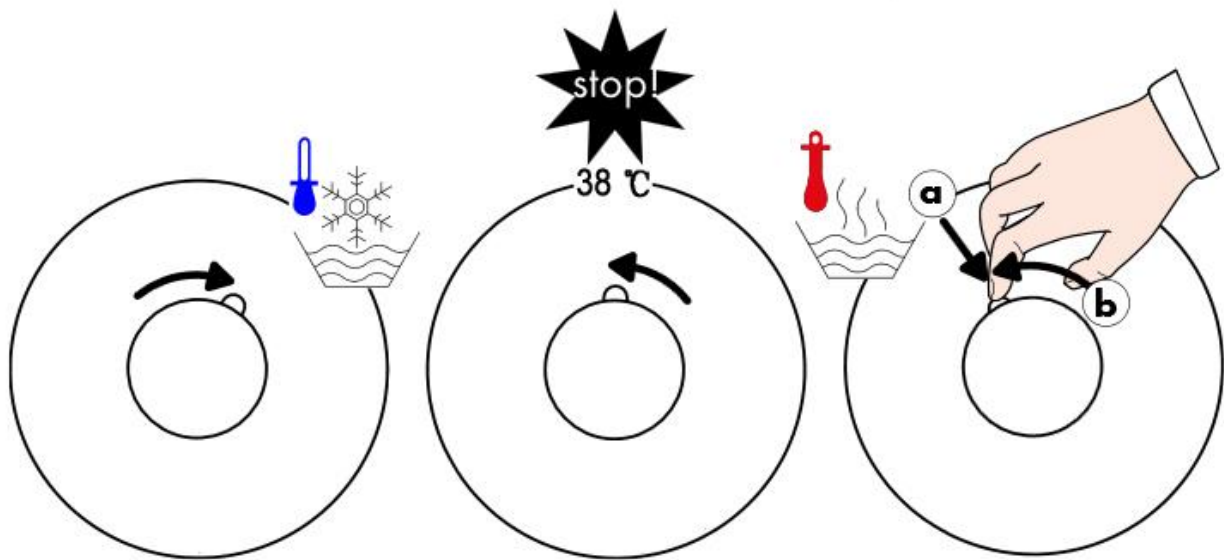
Part VI: User Instructions

Turn the MIDDLE KNOB clockwise to make the water cooler.

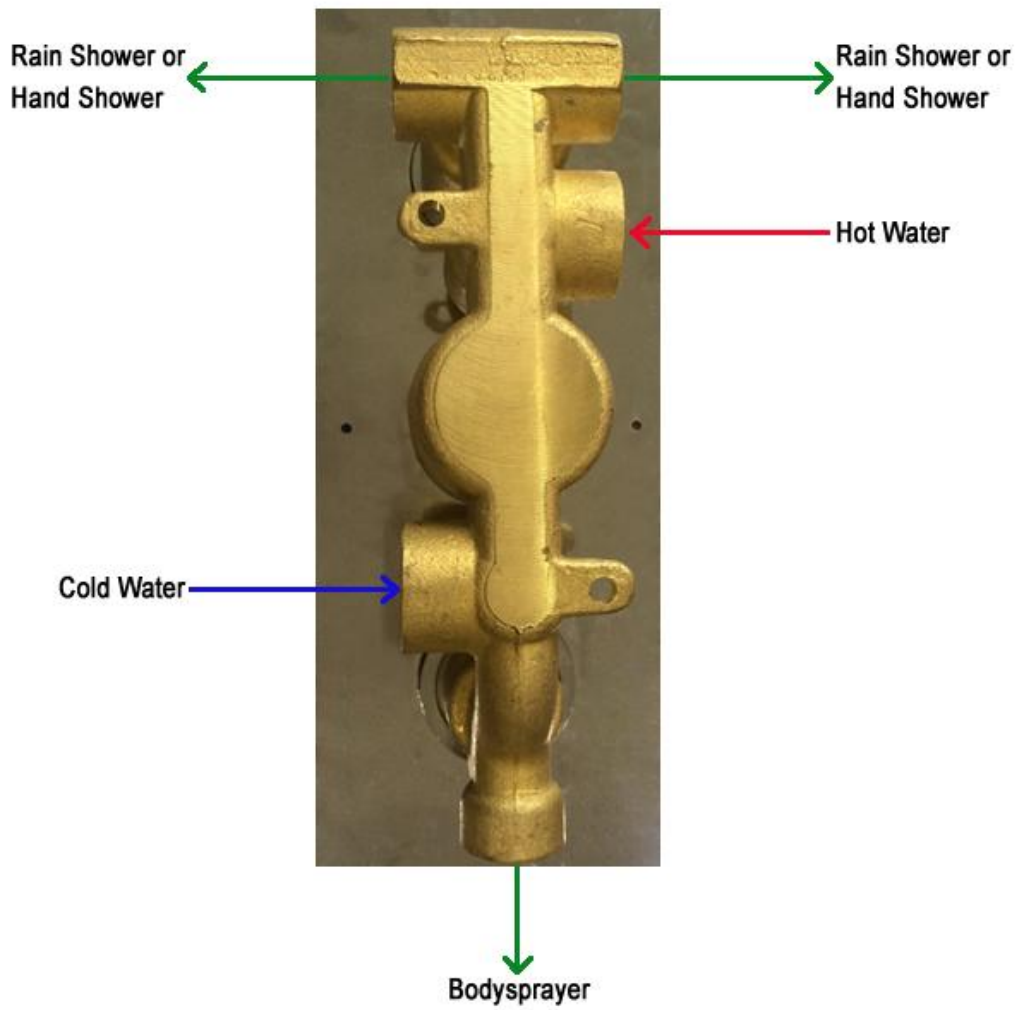
Turn the MIDDLE KNOB counter-clockwise to make the water warmer.

While making the water warmer, the knob will stop at the 30-49 °C (38 °C recommended) safety stop.

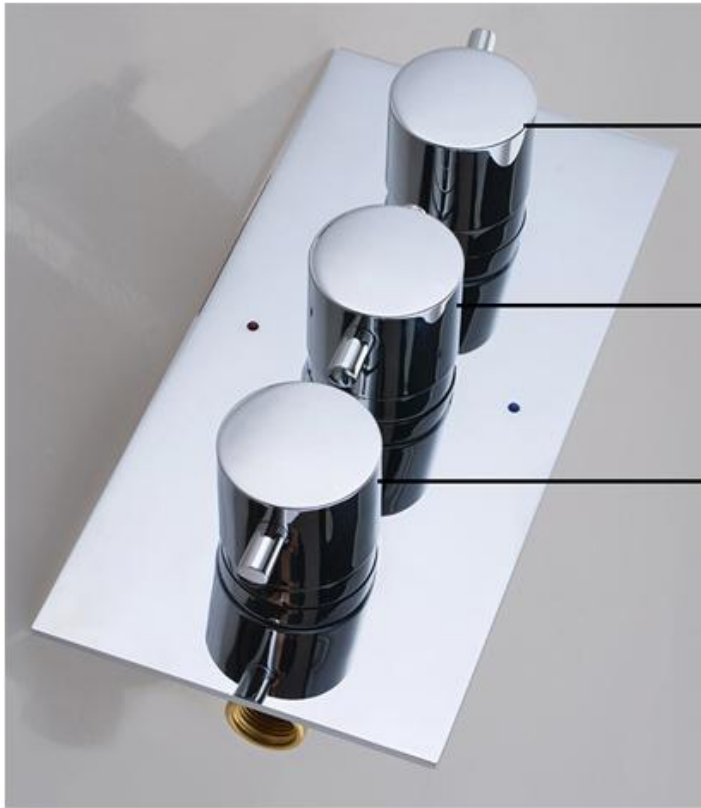
To override the safety stop, press the override button (a) and continue turning the knob counter-clockwise (b).



Part VII: Plumbing Connection for Bodysprayer Shower System



Part VIII: Handle Operating Guide for Bodysprayer Shower System



Rain Shower & Hand Shower Control

Thermostatic Control

Bodysprayer Control